

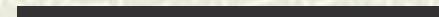
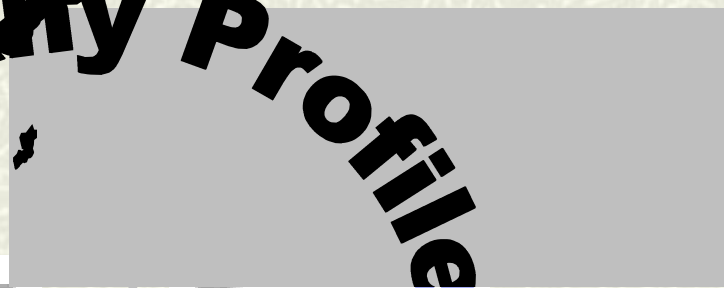
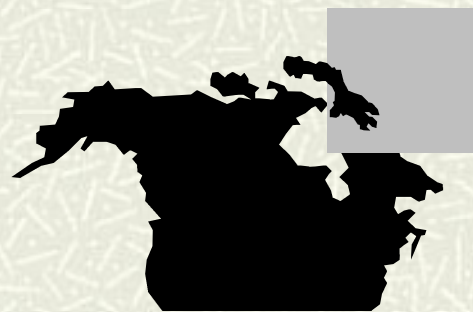
高联科技



MAXCOM TOOLING PTE LTD

Company Profile

Company Profile



# MISSION

**To design, manufacture and deliver high quality, cost effective, products through continuous improvement, innovations, technical competency, teamwork and commitment to achieve customer's expectation, satisfaction and trust**







## MAXCOM TOOLING PTE LTD

### ❑ THE COMPANY:

MAXCOM TOOLING PTE LTD

( established since 2000 )

MAXCOMTECH PTE LTD

( established since 2006 )

### ❑ STAFF STRENGTH:

more than 40 staff include (25% in engineering development work)

### ❑ OVERSEAS SALES & REPRESENTATIVE LOCATION:

#### MALAYSIA

HP: (012) 488 8535

Email: sales.my@maxcomtech.com

#### MEGANORTH ENGINEERING (M) SDN BHD

TEL: (604) 397 0548

HP: (604) 397 0518

[Http://www.meganorth.com.my](http://www.meganorth.com.my)

#### THAILAND

TEL: (662) 901 2119

HP: (668) 1741 7146

Email: sales.th@maxcomtech.com

#### DYNA-JES CORPORATION

TEL: (632) 63 2 842-5810

Email: donnie.go@dyna-jes.com

#### PHILIPPINES

TEL: (63) 2553-0646

HP: (63) 917 521 0628

Email: sales.ph@maxcomtech.com

# MAXCOM TOOLING PTE LTD

## OUR CORE BUSINESS:

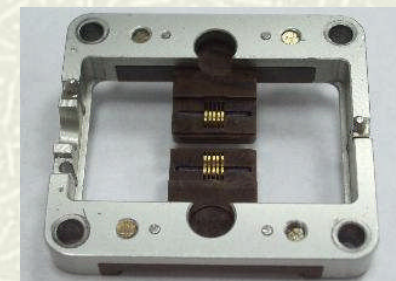
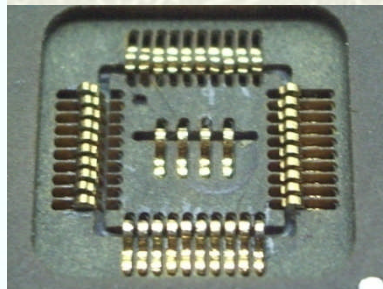
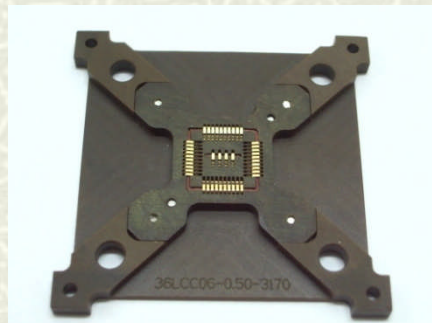
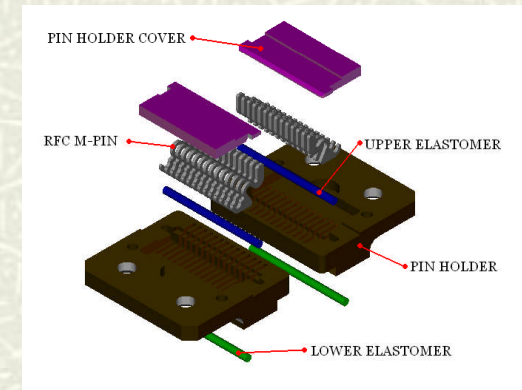
We Provides services to the semiconductor by designing & Manufacturing M-Pin with Contactor and Manual Actuator products.

- Our New concept & geometry of the M-pin is to improve the replaceability of the existing pin.
- Replacement Contactors and Mounting Blocks are available for most major handler manufactures.



## The Advantage of M-Pin series design:

- M-Pin is design in such a way that it will not have friction on the test Board (Reduce the lead free matter and there will be no damages on the DUT Board).
- Able to replace on various type of test socket.
- This M-Pin design will replace the OEM test finger & test contacts which enable customer to have cost reduction. (Pin can be replace individually)

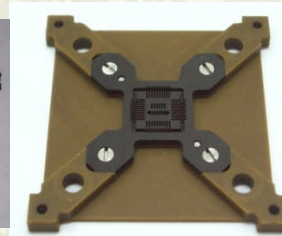
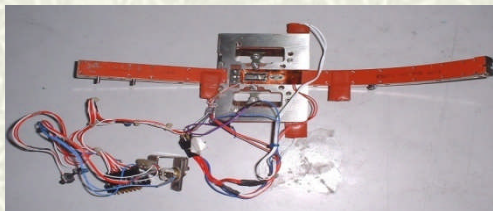
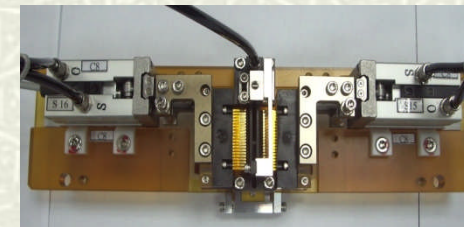




# MAXCOM TOOLING PTE LTD

## PRODUCTS AND SERVICES:

- ❖ Parts designed and manufactured in-house using advanced computer controlled equipment :
  - ❖ Precision Spare parts, test sockets and device change kits
- ❖ Quality replacement parts and reverse engineering of mechanical parts
- ❖ Design and fabrication of high precision Jigs and Fixture for semiconductor, electronics and leading high tech industries
- ❖ Supply of wire pull, ball shear & die shear tools
- ❖ Fabricate work holders for bond testers
- ❖ Automation projects using robotics and machine vision
- ❖ Retrofit and recondition IC test handlers.
- ❖ Purchase and sell used IC test handlers
- ❖ Trade and supply ferrous metals (iron & steel) and Non-ferrous metals (Aluminium, Copper, Tin, Zinc, Nickel and Lead), Plastic Resin, Moulding Compound....etc
- ❖ New products/services.....M-Pin, Z-Pin, Gold Plating service

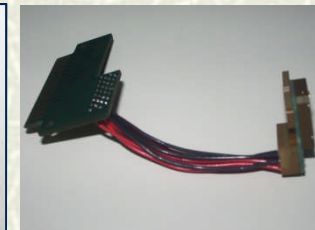
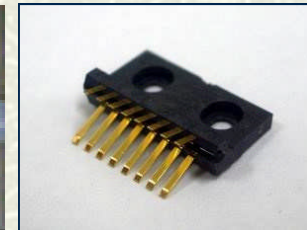
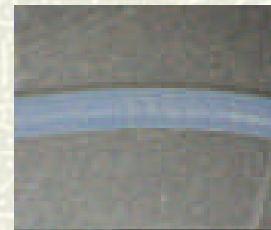
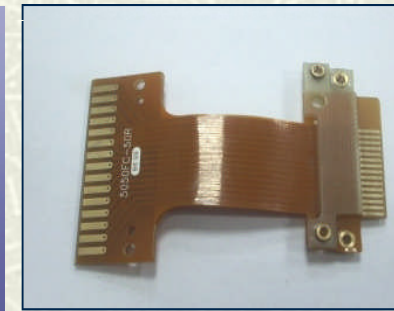
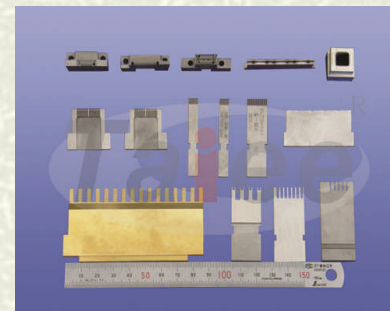
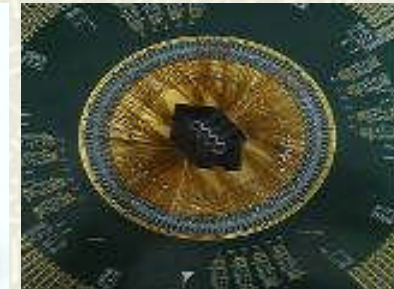
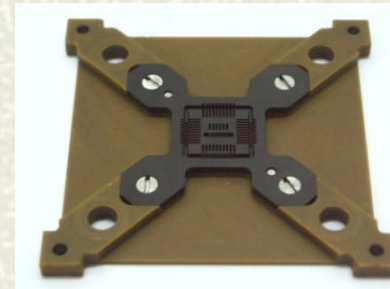




# MAXCOM TOOLING PTE LTD

## NEW DEVELOPMENT PRODUCTS :

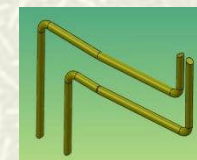
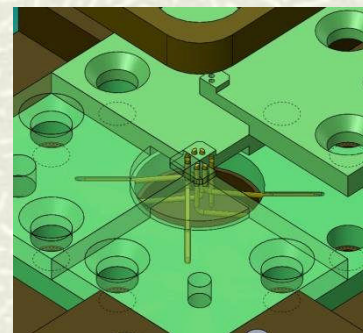
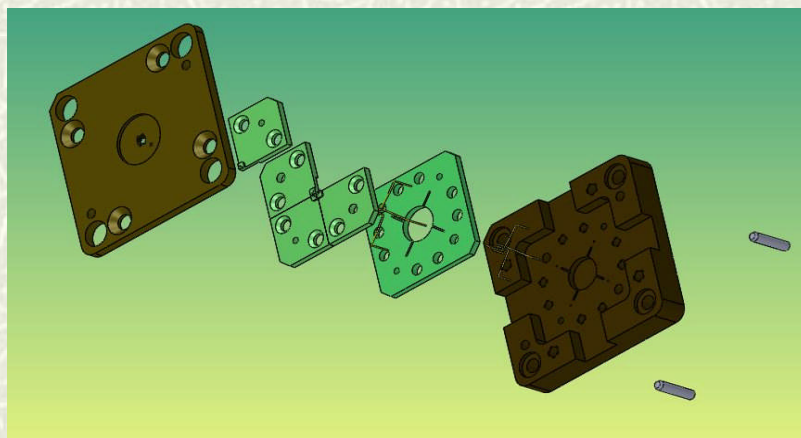
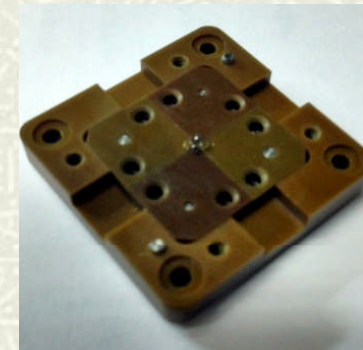
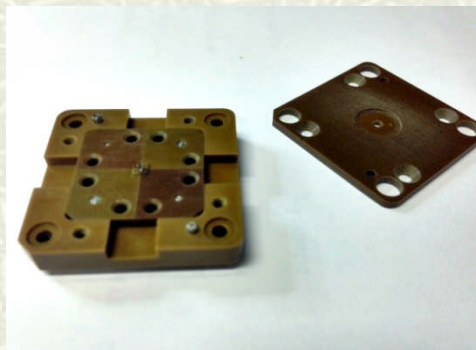
- ✓ Flex Circuit for contact element.
- ✓ Precision Tungsten Tools fabrication
- ✓ Supply of Burn In Socket .
- ✓ Heating Element.
- ✓ M-Elastomer.
- ✓ MT Test Finger.
- ✓ New Engineering Plastic and Ceramic Material.
- ✓ Pogo type Test Socket.
- ✓ Probe Card Rework / Rebuild.
- ✓ Rasco Kelvin Design Off-Set Pogo Test Socket..
- ✓ Gold Re-Plating services





# MAXCOM TOOLING PTE LTD

**Z-pin** design main purpose is for testing smaller device(QFN)  
packages for Kelvin and Non Kelvin application



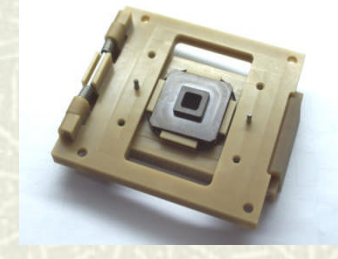
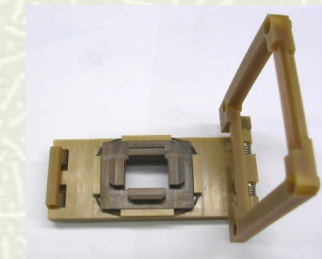
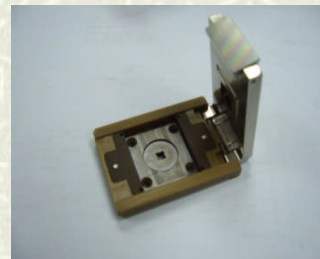
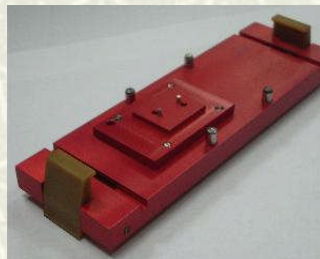
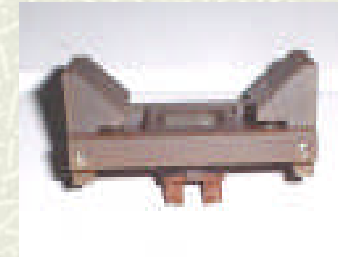
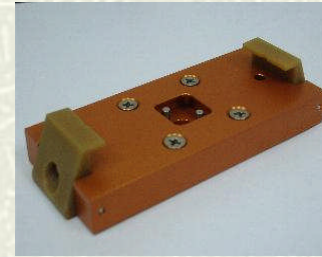
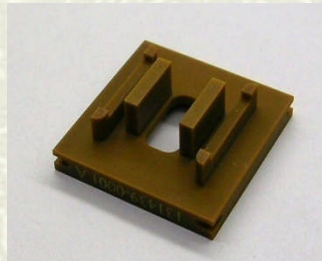
Assembly inset view showing the Z-pin(upper and lower).

高联科技



# MAXCOM TOOLING PTE LTD

## MANUAL ACTUATOR AND TEST LEDGE PRODUCTS :





# MAXCOM TOOLING PTE LTD

## OUR CORE BUSINESS:

We design & manufacture equipment and precision engineering products provide services to the semiconductor and electronic industry.

## MANUFACTURING:

- |  |                  |
|--|------------------|
| ▪ Pulse Heat Soldering Machine ( Linear ):       | MX-101 / MX-101A |
| ▪ Pulse Heat Soldering Machine ( Rotary ):       | MX-102 / MX-102A |
| ▪ TAB Pre-Bonding Machine.                       | MX-103           |
| ▪ TAB Bonding Machine.                           | MX-104           |
| ▪ COG Final Bonding Machine ( Single Table ).    | MX-108           |
| ▪ COG Final Bonding Machine ( Double Table ).    | MX-109           |
| ▪ Multi-Function LCD Re-Work Station             | MX-110           |
| ▪ Constant Heated Soldering Machine ( Linear ) . | MX-201           |
| ▪ Constant Heated Soldering Machine (Rotary) .   | MX-202           |
| ▪ Pulse Heated Fine Adjust Spot Welding Machine  | MX-301           |
| ▪ Pulse Heated Controller                        | MX-401           |
| ▪ Hot Stamp Soldering Machine                    | MX-501           |
|  |                  |
| ▪ Contactor Alignment Jig ( 5050T ):             | MT-1001          |
| ▪ Contactor Alignment Jig ( 5050S ):             | MT-1002          |

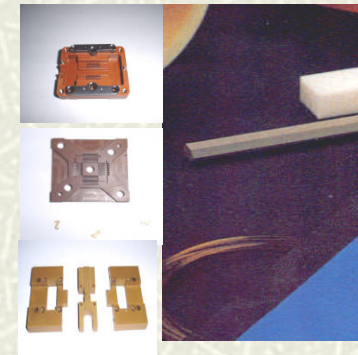




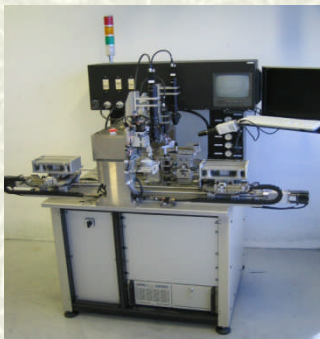
# MAXCOM TOOLING PTE LTD

## REPRESENTATIVE PRODUCTS:

- **EPS**-Supply of semi-finished Engineering Plastics Materials:  
Vespel (SP-1, SP-21), Torlon (4301, 4203, 5530), Utem, Peek,  
Pek-KC, Semitron, ESD Nylon, Ceramic and others.
- **ACCURATUS** – Bonding Machine Series
- **HTC** – LCD Bonding Protective Materials



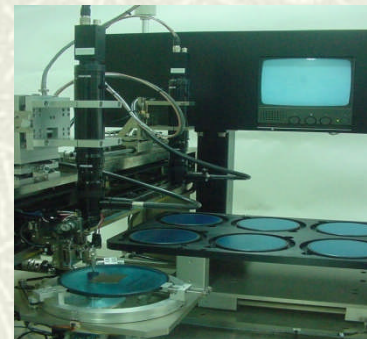
A500X Dual Carriage  
COB Bonder



A8000X High Speed L  
ED/COB Bonder



A8000DS Die Sorter



A3000FC Flip Chip Bonder





# MAXCOM TOOLING PTE LTD

## REPRESENTATIVE PRODUCTS:

### Metal Division

We supply and trading ferrous Metals (Iron and Steel) and Non-ferrous Metals (Aluminium, Copper, Tin, Zinc, Nickel and Lead).

Our priority is in helping our worldwide clients in bringing down the cost and creating strong.



### **I) Ferrous Metals**

- Carbon steel – Carbon content of 0.6 to 1.4% and Iron content of 98.6 to 99.4 %. Used to make cutting tools.
- Mild Steel – Carbon content of 0.1 to 0.3% and Iron content of 99.7 – 99.9%. Used for engineering purposes.
- Stainless Steel – Made up of Iron, nickel and chromium. Resists staining and corrosion. Use for making cutlery and surgical instrument.
- Cast Iron – carbon 2 – 6% and Iron at 94 to 98%. Very strong but brittle. Used for making engine blocks and manhole covers.
- Wrought Iron – Composed of almost 100% iron. Used to make ornamental gates and fencing

### **II) Ferrous Metals**

- Aluminium – An alloy of aluminium, copper and manganese. Very lightweight and easily worked. Used in kitchenware, aircraft manufacture, window frames.
- Copper – A natural occurring substance that conducts heat and electricity. Used for wiring, tubing and pipe work.
- Brass – A combination of copper and zinc, usually in the proportions of 65% to 35% respectively. Used for electrical fittings and ornamental purposes.
- Silver – A natural substance, but mixing with copper creates sterling silver. Used for decorative ornaments and jewellery as well as to solder different metals together.
- Lead – Lead is a naturally occurring substance. It is heavy and very soft and is often used in piping, roofing and in batteries.

### **Resin and Compound Division**

Our specialty is in PVC resin and compound, PP, PE (HDPE, LDPE), PET, OPP, Colour Materbatches, that are extensively used in plastic production and other industries.





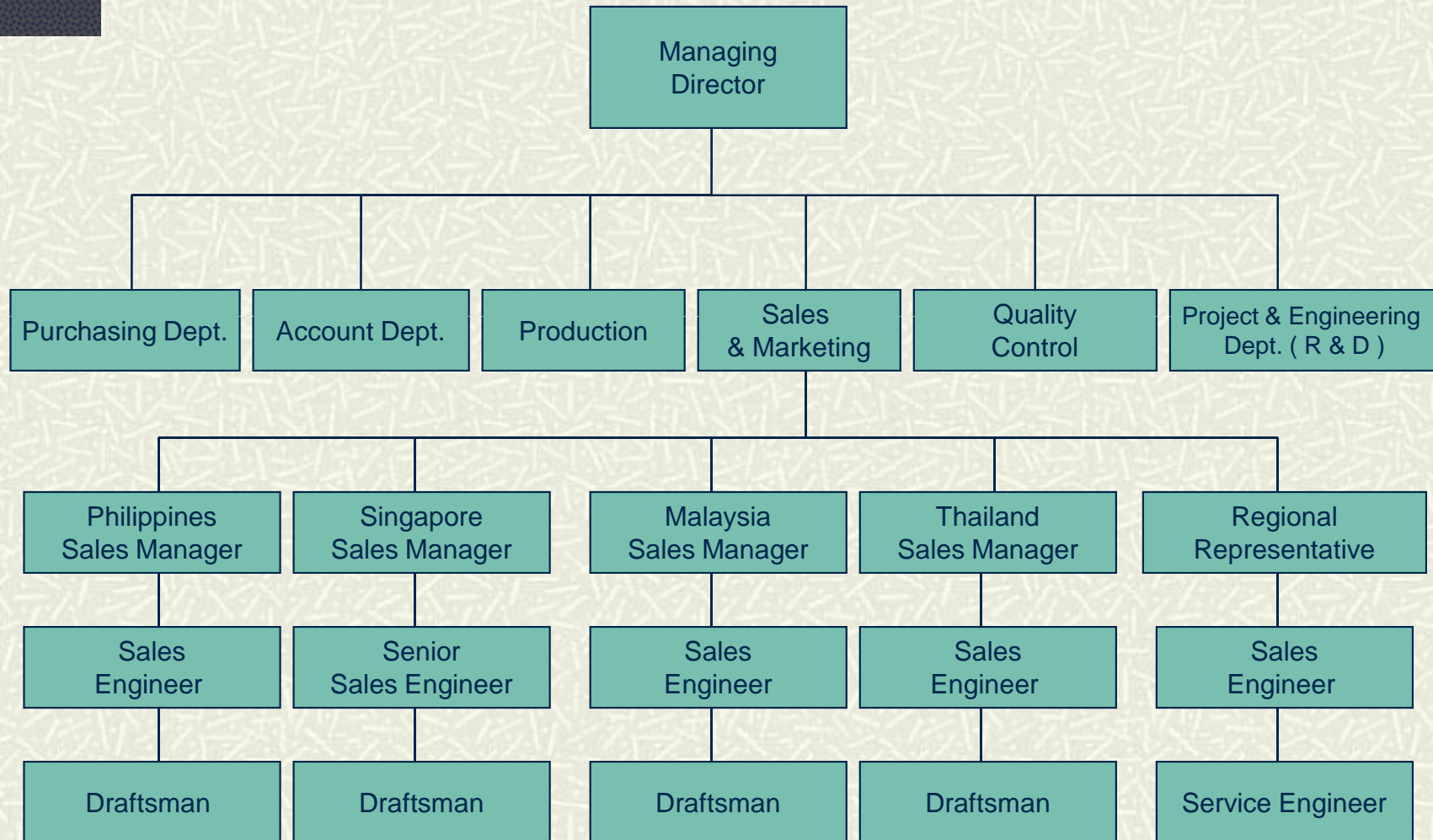
## MAXCOM TOOLING PTE LTD

- Avago Technologies Pte Ltd.
- Analog Devices.
- Amkor Technology
- Allegro Microsystems
- AMI Semiconductor
- Amertron Incorporated
- ASE Electronic ( M ) SDN BHD
- Belton Industrial ( Thailand ) Ltd.
- Chippac ( Shanghai ) Co., Ltd
- Carsem Semiconductor.
- Cypress Semiconductor.
- JDS Uniphase Singapore Pte Ltd
- Fabrinet Co.,Ltd.
- United Test and Assembly Center Ltd.
- HANA Semiconductor ( BKK ) Co., Ltd.
- Integrated Devices Technology
- Lite-On Electronics ( Thailand ) Co., Ltd.

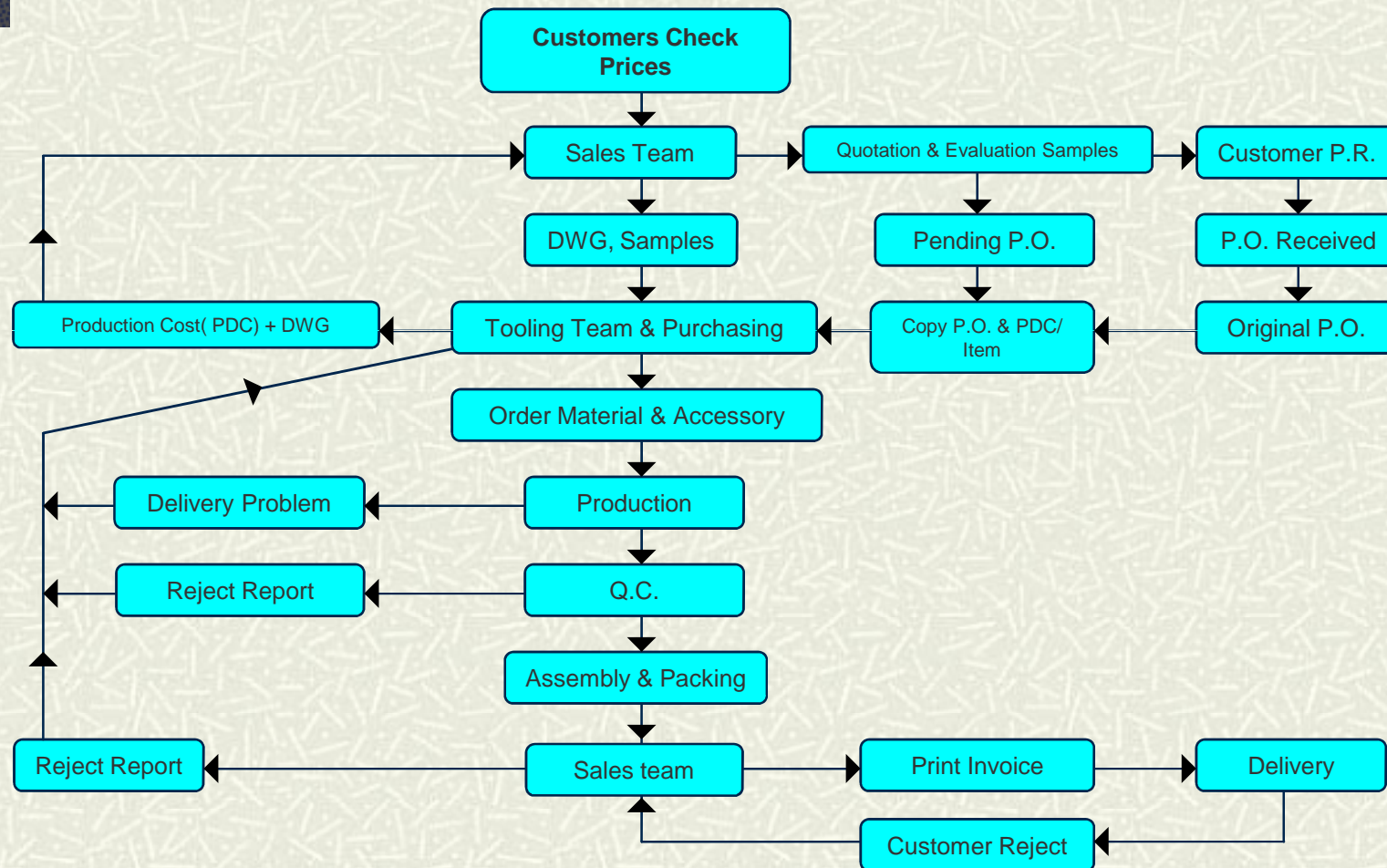
- Linear Technology Pte Ltd.
- Millennium Microtech (Thailand) Co., Ltd.
- Maxim Phils. Operating Corp.
- Microchip Technology ( Thailand ) Co., Ltd.
- Millennium Microtech ( Shanghai ) Co.,Ltd.
- Maxim Integrated Products ( Thailand ) Co., Ltd.
- NS Electronics Bangkok ( 1993 ) Ltd.
- Nantong Fujitsu Microelectronics Co., Ltd
- On Semiconductor
- OSE Semiconductor
- NXP Semiconductor
- NXP Electronics ( Thailand ) Ltd.
- PSI Technologies, Inc.
- Saturn Electronics Singapore Pte Ltd.
- Stars Microelectronics ( Thailand ) Public Co.,Ltd.
- Trio-Tech International Pte Ltd
- Unisem ( M ) Berhad.



# MAXCOM REGIONAL ORGANISATION & REPRESENTATIVE CHART



# MAXCOM MACHINE SHOP FLOW CHART





高  
联  
科  
技



**MAXCOM TOOLING PTE LTD**

## Facilities



Administration & Shipment Section



Products Engineering & Design



R & D Section



QC Inspection Section



CNC Machining Center



Conversional Machining Section



高联科技



**MAXCOM TOOLING PTE LTD**

## **Our Subsidiary Facilities**



CNC TURNING SERVICE



CNC WIRE CUT SERVICE





高联科技



MAXCOM TOOLING PTE LTD

---

*Thank You*

---